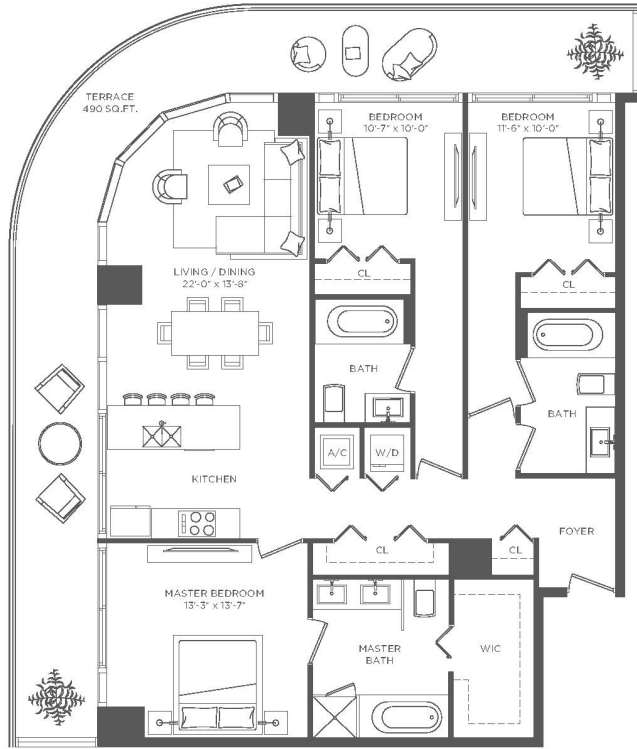




**SLS LUX<sup>®</sup>**  
BRICKELL



**SLS RESIDENCE 09**  
3 BEDROOMS / 3 BATHS

A/C INTERIOR AREA	1,660 SQ. FT.	154.21 SQ. M.
TERRACE AREA	490 SQ. FT.	45.59 SQ. M.
<b>TOTAL RESIDENCE</b>	<b>2,150 SQ. FT.</b>	<b>199.73 SQ. M.</b>

Each purchaser is advised that there are various methods for calculating the square footage of a Unit, and that depending on the method of calculation, the quoted square footage of a Unit in advertising materials may vary from the square footage of a Unit as stated or described in the Prospectus and the Declaration. The dimensions of the Unit shown in these floor plans have been calculated from the exterior boundaries of the exterior walls to the centerline of interior demising walls, including common elements such as structural walls and other interior structural components of the building and in fact vary from the dimensions that would be determined by using the description and definition of the "Unit" set forth in the Prospectus and the Declaration. For your reference, the area of the Unit, determined in accordance with Unit boundaries as defined in the Prospectus and the Declaration is less than the square footage reflected here. The configuration and use of space or the floor plan design may vary from that in the Prospectus and Declaration because the Developer has reserved the right in the Prospectus to make design, dimension, specification, and plan changes at any time, in the Developer's discretion, without notice to Unit buyers. Note that measurements of rooms set forth on this floor plan are generally taken at the greatest points of each given room (as if the room were a perfect rectangle), without regard for any closets. Accordingly, the area of the actual room will typically be smaller than the product obtained by multiplying the stated length times width. All dimensions are approximate and may vary with actual construction, and all floor plans and development plans are subject to change. The furnishings and decor illustrated are not included with the purchase of the Unit. See Prospectus for additional information regarding what is offered with the Unit and the calculation of Unit square footage and dimensions.

