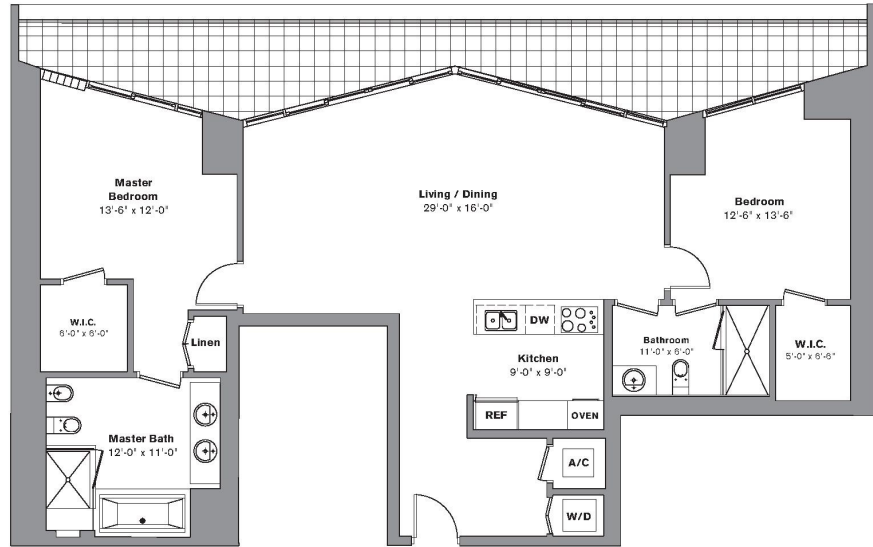
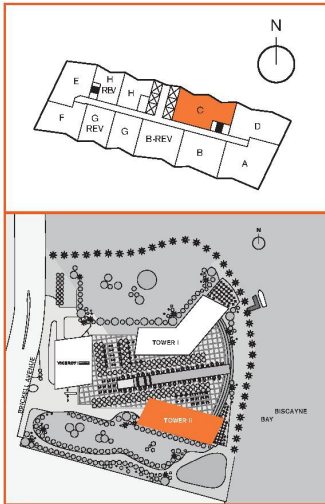


2 Bedroom / 2 Bath
Area under AC: 1,500 SF / 139.35 m²
Balcony: 300 SF / 27.87 m²
Total: 1,800 SF / 167.22 m²



Stated dimensions are measured to the exterior boundaries of the exterior walls and the centerline of interior dividing walls and in fact vary from the dimensions that would be determined by using the description and definition of the "line" set forth in the Declaration, which guaranty only include the interior spaces between the perimeter walls and exclude interior structural components. Additionally, measurements of rooms set forth on any floor plan are generally taken at the greatest points of each given room (as if the room were a perfect rectangle), without regard for any columns. Accordingly, the area of the actual room will typically be smaller than the product obtained by multiplying the stated length times width. All dimensions are approximate and all floor plans and development plans are subject to change.